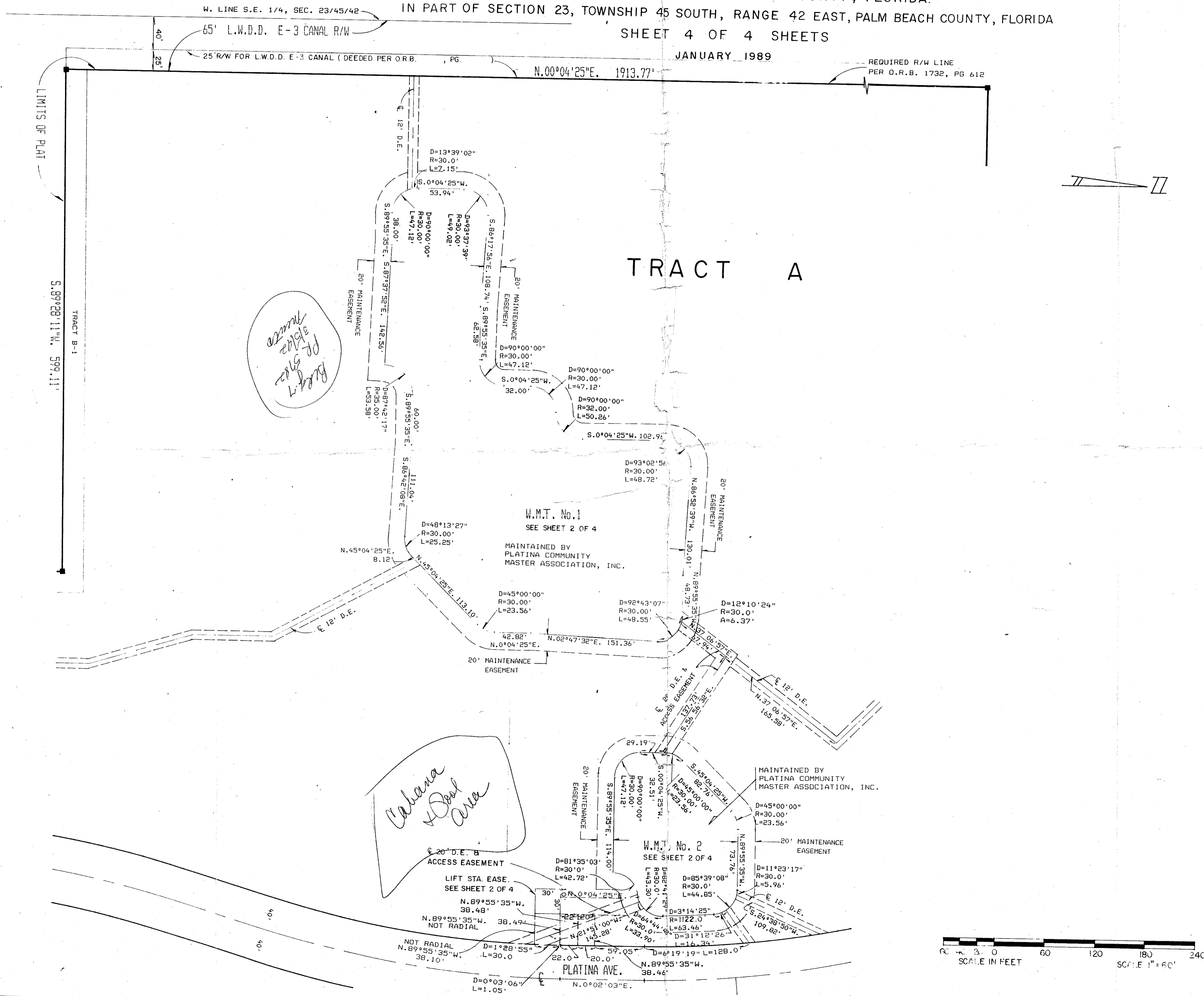


PLATINA PLAT NO. 1 IN COUNTRY CLUB TRAIL - P.U.D.

A REPLAT OF LOTS 29-34 OF BOYNTON GARDENS
AS RECORDED IN PLAT BOOK 6, PAGE 32
PUBLIC RECORDS OF PALM BEACH COUNTY, FLORIDA.

IN PART OF SECTION 23, TOWNSHIP 45 SOUTH, RANGE 42 EAST, PALM BEACH COUNTY, FLORIDA
SHEET 4 OF 4 SHEETS

JANUARY 1989



SUBDIVISION * Platina Plat No. 1
 BOOK 63 PAGE 85
 FLOOD ZONE B FLOOD MAP # 194B
 ZONING # 35 ZONING # 72-51
 ZIP CODE 33437
 PID # 62 445

0226-005

63/85

| | | |
|--|-------------------------------------|-----------|
| SCALE: SHOWN | NICK MILLER, INC. Land Surveying | DRAWN BY: |
| DATE: JAN. 1989 | Planning & Development Consultants | CHK: |
| PLATINA PLAT NO. 1 IN COUNTRY CLUB TRAIL - P.U.D. | | |
| 2560 RCA Blvd. • Suite 105 Palm Beach Gardens, Florida 33410 (407) 627-5200 | | |
| DRAWING NUMBER | | 88025F |